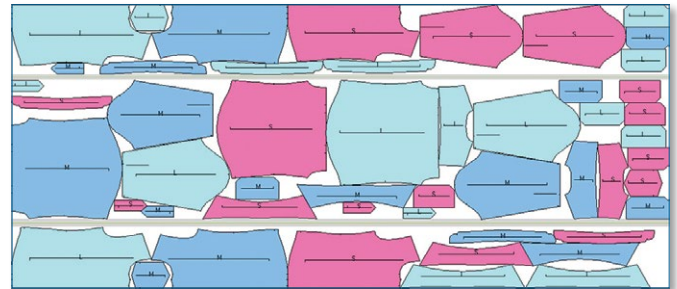
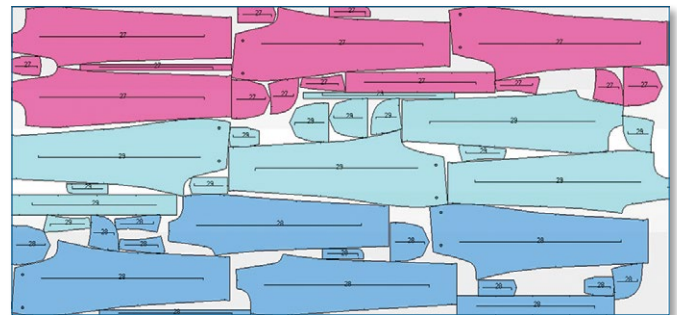


It's more than optimization.

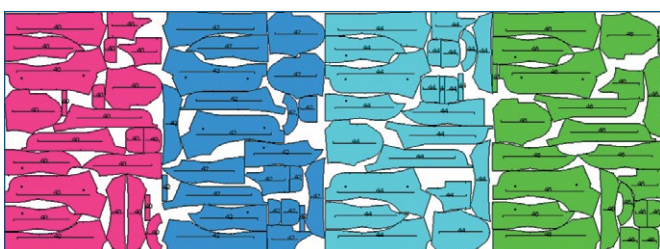
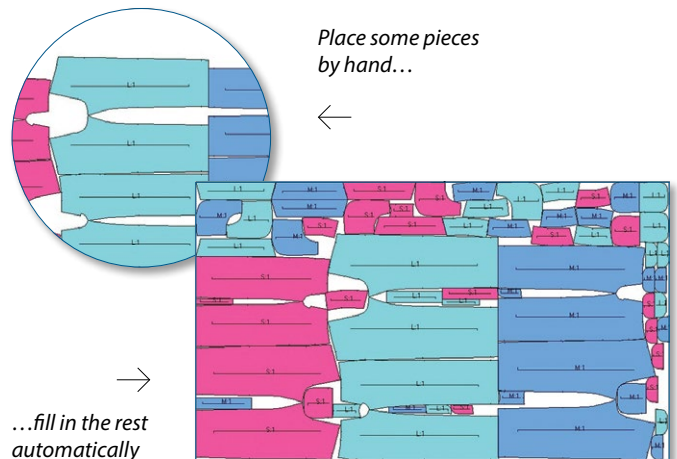
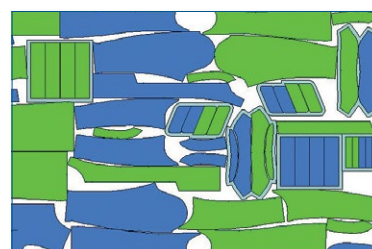
PolyPattern Marker is designed to maximize your productivity, minimize your labor cost and fabric consumption, and optimize your fabric orders.

PolyPattern AutoMarker generates optimal markers in minutes or even seconds - while giving you the greatest flexibility to deal with complex fabric, cutting, and production considerations, such as fabric defects, fabric color variations, fabric prints, stepped fabric lays, block fusings, and more. PolyPattern AutoMarker will even determine the optimal fabric width for a specific order.


Handle fabric defects with flexibility

Efficiently manage fabrics with color discrepancies

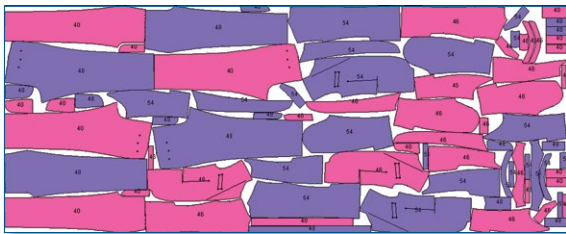
70% less human effort

8% less fabric

100% automation

Get tight markers, even for stepped fabric lays

Use fusing blocks in AutoMarker


It's more than optimization.

Since 1990, PolyPattern customers have enjoyed higher productivity.



Treat separate garments as a set

Setup AutoMarker Width Optimization

Specify the Range of Marker Widths

Minimum Width: cm.

Maximum Width: cm.

Increment: cm.

Specify when to run the AutoMarker on these alternate widths

Create files only

Create files, put in AutoMarker queue

Create files, put in AutoMarker queue, and run now

Fabric is costed in:

Length

Weight

AutoMarker Width Optimization Results

Width	Length	%Used	Cost	Marker Name
176.00	353.20	88.41	0.72	PRE_COSTING-176.MRK
180.00	352.21	86.21	0.70	PRE_COSTING-180.MRK
178.00	356.43	86.13	0.71	PRE_COSTING-178.MRK
182.00	348.86	86.08	0.70	PRE_COSTING-182.MRK

PolyPattern finds the optimal fabric width

COST

MARKER INFORMATION

Marker Length (m):	4.0294	Marker Width (m):	1.5000
Extra Fabric Length (cm):	2	Extra Fabric Width (cm):	1.5
Layed Fabric Length (m):	4.0494	Layed Fabric Width (m):	1.5150
% Waste Marker:	16.88	Num SETS (computed):	2
% Waste Layed Fabric:	16.11		
Qty per size:	1		1

COST PER SET

Finished Fabric Weight per sq. meter:	180	grams
Extra Fabric per Piece:	0.00	grams
Average Weight per Piece:	552.13	grams
Finished Fabric Price per Kilo:	8.4	units
Finished Fabric Cost per Piece:	4.64	units

FABRIC ORDER

SETS for Order:	1280	
Extra:	6	%
Required Fabric Weight:	749.13	kilos
Dyeing Waste:	0.00	%
Required Greige Fabric Weight:	749.13	kilos

COSTS BY MODEL

Garment Code:	JACKET
Assortment:	38 46
	1 1
Number of parts:	2
% of Fabric Used:	44.5%
Average Weight per Piece:	245.89
Finished Fabric Cost per Piece:	2.07
Garment Code:	TROUSER
Assortment:	27 31
	1 1
Number of parts:	2
% of Fabric Used:	55.5%
Average Weight per Piece:	306.25
Finished Fabric Cost per Piece:	2.57

Detailed Fabric Costing



- **Maximum Productivity in Marker Making:** Handle more production conditions automatically
- **24/7 Operation:** Leave jobs for overnight execution
- **Optimized Piece Placement**
- **Optimal Fabric Orders:** Order the right amount of fabric, in quantity and in width
- **Reduced Production Mistakes:** Use PolyPattern's customizable warning system
- **Reliable Data Exchange with Partners:** Interface with other CAD systems, applications, and a wide range of machines